

Projects in Kampala, Uganda

tower with offices, hotel, restaurants, business area, and shopping area

Amber is a registered company in Uganda, Kampala with a trading license, and mineral dealer license for the year 2024.

Amber is also working closely with the mine owners inside Uganda and importing gold from the East African countries in transit for export to different countries and governments such as Turkey, UAE, Qatar, Hong Kong and Taiwan.

Amber is involved in different kinds of business in Uganda such as trading some items, and is studying some investment projects in agriculture and some tourist projects.



INTRODUCTION ABOUT THE PROJECT IN KAMPALA:

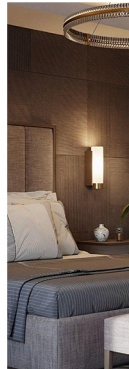
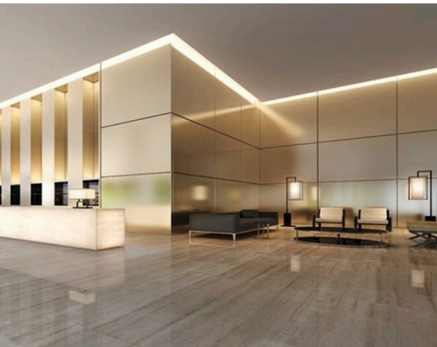
A LAND OF THE SIZE OF 4085 SQM CONSISTS OF A HIGH-CLASS RESTAURANT, A HIGH-CLASS BIG HOTEL WITH 375 ROOMS AND SUITES. A WELL-EQUIPPED BUSINESS CENTER FOR ALL KINDS OF MEETINGS, LECTURES, FORUMS, SEMINARS, TEACHING, AND DISCUSSIONS. A WELL-EQUIPPED OFFICE AS A HEAD QUARTER OF THE MANAGING COMPANY THAT OFFERS SERVICES OF INSPECTING GOODS, LOGISTIC AND LEGALIZING BUSINESS. THE LAND WILL ALSO HAVE THE WAREHOUSE FOR PRECIOUS METALS ESPECIALLY GOLD AND IT WILL HAVE A REFINERY AND A LAB FOR TESTING AND CERTIFYING THE PRODUCT.



THIS PROJECT WILL BE ESTABLISHED TOGETHER WITH NEC AS A JV. NEC OFFERS THE LAND WHILE AMBER & NEC WILL DO THE CONSTRUCTIONS AND THE MANAGEMENT. AMBER WILL BE IN CHARGE OF ARRANGING THE FUND FOR THE PROJECT BY BOTH INTERNAL INVESTMENT FROM AMBER AND OPEN THE INVESTMENT PROGRAM FOR THOSE WHO ARE INTERESTED IN SUCH PROJECTS AND INVESTMENTS.

NEC NATIONAL ENTERPRISE CORPORATION IS A GOVERNMENT ESTABLISHMENT UNDER THE MINISTRY OF DEFENSE IN UGANDA. AMBER INTERNATIONAL GROUP LTD HAS A JOINT VENTURE WITH NEC IN THIS PROJECT AND HAS SOME OTHER BUSINESS SHARING IT TOGETHER.

THE TOWER PROJECT WILL BE MONITORED AND ESTABLISHED WITH THE FULL CORPORATION BETWEEN NEC AND AMBER.



AMBER AND NEC ALREADY VISITED THE LAND LOCATED AT JOHN BABIHA (ACACIA) AVE, KAMPALA, UGANDA. THE LAND IS 4085 SQM.

THE LOCATION OF THE LAND IS ONE OF THE BEST LOCATIONS IN ALL OF KAMPALA; IT IS NEAR THE BIGGEST MALL IN TOWN, EASY TO REACH, HIGH-CLASS AREA, AND VERY WELL-KNOWN AREA.

THIS PROJECT WILL BE THE BIGGEST IN ALL OF UGANDA AND IT MAY EVEN BE THE BIGGEST IN ALL OF THE EAST AFRICA. WE BELIEVE THAT ALL THE EMBASSIES, BANKS HIGH-CLASS BRANDS, RESTAURANTS, AND THE TOP FIVE-STAR HOTELS WILL BE VERY INTERESTED IN LEASING INSIDE THE TOWER.

THE ESTIMATED TIME FOR FINISHING THE WHOLE PROJECT IS NOT MORE THAN 36 MONTHS FROM THE DAY WE START THE CONSTRUCTION.

WE HAVE NOT YET DECIDED WHICH COMPANY WILL DO THE CONSTRUCTION WORK; HOWEVER WE ARE INTERESTED IN ONE OF THE UAE LOCAL CONSTRUCTION COMPANIES TO BUILD IT DUE TO THEIR LONG TIME EXPERIENCES IN THESE KIND OF CONSTRUCTIONS.

WE ARE OPENING THIS PROJECT FOR INVESTMENT PLANS BECAUSE WE ARE SURE THAT IT WILL BE A GOOD AND SUCCESSFUL EXPERIENCE, WHICH WILL OPEN NEW DOORS FOR INVESTORS IN UAE TO INVEST IN AFRICA THIS WILL BE THE FIRST BUT NOT THE LAST PROJECT WE DO TOGETHER WITH THE COOPERATION WITH NEC

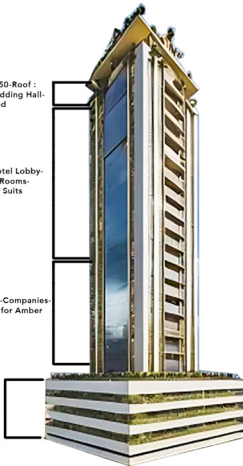


Floors 48-49-50-Roof :
Restaurants-Wedding Hall-
Helipad

Floors 20-47 : Hotel Lobby-
Service floor-Rooms-
Suits- Royal Suits

Floors 8-19 : Offices-Companies-
Banks-Main office for Amber

Floors 1-7 :
Gym-Spa-Swimming
pool-Clinics





ESTIMATED AND EXPECTED BUILD AREAS (SUBJECT TO FINAL DECISION AFTER THE CONSULTATIONS).

THE UNDERGROUND AREA WILL BE AROUND 2500 SQM.

THE BUILD AREA FOR THE MAIN BUILDING WILL BE 1300 SQM X 50 FLOORS

A ONE FLOOR WITH THE SIZE OF 1000 SQM FOR AMBER REFINERY.

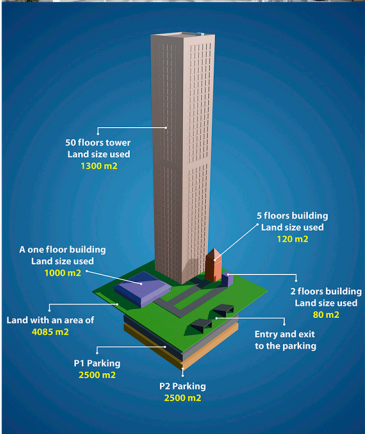
A HELICOPTER BASE AT THE ROOF IF APPROVED BY THE GOVERNMENT.

ANOTHER BUILDING WITH THE SIZE OF 120 SQM X FIVE FLOORS.

A SMALL KIOSK AROUND THE BUILDING FOR LIGHT REFRESHMENT AND BEVERAGES.

A SHOP WITH THE SIZE OF 80 SQM X 2 FLOORS FOR MEDITERRANEAN PRODUCTS.

A TWO FLOORS UNDERGROUND AREA AS BIG AS IT CAN BE.

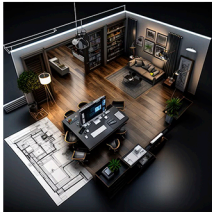


FIRST PHASE: BUILDING DETAILS

MAIN BUILDING

THE MAIN BUILDING CONSISTS OF THE FOLLOWING:

- PARKING THAT COVERS ALL THE NEEDED SPACE FOR CARS FOR THE WHOLE PROJECT.
- A SEPARATED ONE FLOOR BUILDING WITH FULL FACILITY AREA FOR THE GOLD BUSINESS INCLUDING WAREHOUSE, REFINERY, LAB FOR TESTING, AND PERSONAL SAFETY BOXES FOR THE CLIENTS.
(THIS PART IS OWNED BY AMBER TOTALLY BUT USING THE FACILITIES OF NEC).
- LUNDRY FOR THE WHOLE BUILDING.
- FROM THE FIRST FLOOR TO THE SEVENTH FLOOR, ENTERTAINMENT AND FACILITIES FLOORS.
- LOBBY, COFFEE SHOP, MINI MARKET, AND SITTING AREA.
- TRAVEL AGENCY.
- SPA & BATH.
- FITNESS FOR THE WHOLE BUILDING.
- SWIMMING BALL FOR THE WHOLE BUILDING.
- DENTAL CLINIC.
- CLINICS FOR GENERAL MEDICAL ISSUES.
- CLINIC FOR PHYSICAL THERAPY WITH ENERGY HEALINGS.
- BEAUTY SALON.
- CLINIC FOR BEAUTY AND SIMPLE SURGERIES.
- BARBER.
- PRAYER ROOM.
- FROM THE EIGHTH FLOOR TO THE NINETEENTH FLOOR, IT WILL BE BUSINESS OFFICES SUCH AS COMPANIES, BANKS, EMBASSIES, AND SO ON. THESE OFFICES ARE TO BE LEASED (RENT AND OR SALE) FOR COMPANIES WHILE THE GROUND FLOOR WILL BE THE SHARED LOBBY UP TO THE NINETEENTH FLOOR.
- THE HEAD OFFICE OF AMBER WILL BE IN THE EIGHTEENTH FLOOR.
- NINETEENTH FLOOR WILL BE FOR NEC.





- TWENTIETH FLOOR WILL BE THE LOBBY OF THE HOTEL AND THE HOTEL WILL BE FROM THE TWENTIETH FLOOR TO THE FORTY SEVENTH FLOOR TOTALLY WILL BE 360 ROOMS, 10 SUITES AND 5 ROYAL SUITES.
- THE TWENTY-FIRST FLOOR WILL BE THE RESTAURANT OF THE HOTEL FOR SERVING THE BREAKFAST AND THE ROOM SERVICE.
- THE FORTY-EIGHTH FLOOR WILL BE HIGH- CLASS FAR-EAST ASIAN RESTAURANTS OPENED FOR PUBLIC.
- THE FORTY-NINTH FLOOR WILL BE HIGH- CLASS MEDITERRANEAN RESTAURANTS OPENED FOR PUBLIC.
- THE FIFTEENTH FLOOR WILL BE THE BANQUETTE FOR WEDDINGS AND OTHER OCCASIONS.
- IF POSSIBLE AND APPROVED, WILL HAVE THE ROOF AS A PRIVATE HELICOPTER'S BASE FOR NEC, AMBER, GOVERNMENT, AND FOR MEDICAL OR EMERGENCY PURPOSES.

- SERVICE BUILDING

THE SECOND BUILDING WILL BE USED MAINLY FOR THE STAFF AND THE SUPERVISORS. THIS BUILDING IS 120 SQM WITH FIVE FLOORS. IT WILL ALL BE FLATS FOR THE STAFF AND THE SUPERVISORS.

- KIOSK

THE KIOSK IS A SMALL VENDER FOR COFFEE, TEA, ICE CREAM, AND SO ON. IT IS IN THE OPENED AREA AND IT HAS CHAIRS AROUND FOR WHOEVER WANTS TO SIT IN AN OPENED AREA.

- THE SHOP

THE SHOP WILL BE 80 SQM X TWO FLOORS. IT IS FOR ALL DIFFERENT KINDS OF THE IMPORTED PRODUCT FROM DIFFERENT PLACES OF THE WORLD.

- THE REFINERY

A ONE FLOOR WITH THE SIZE OF 1000 SQM FOR AMBER REFINERY, AND WAREHOUSE.



NOTE:

WE WILL BE USING THE HIGHEST TECHNOLOGY OF SOLAR, TURBINE, AND OTHER NATURE POWER ENERGY WITH THE UNIQUE LED TECHNOLOGY FROM TAIWAN FOR THE WHOLE PROJECT. MOSTLY WE NEED NOT TO USE THE ELECTRIC POWER FROM THE GOVERNMENT.

CONCLUSION:

WE ARE WELCOMING ALL OUR POTENTIAL BUYERS AND INVESTORS TO JOIN THIS UNIQUE PROJECT IN ALL OF THE EAST OF AFRICA.

KINDLY CONTACT US FOR FURTHER INFORMATION.

